



# MONTHLY MEMBERSHIP PROGRESS REPORT

Results as of: 12/31/2016

Multiple District 301

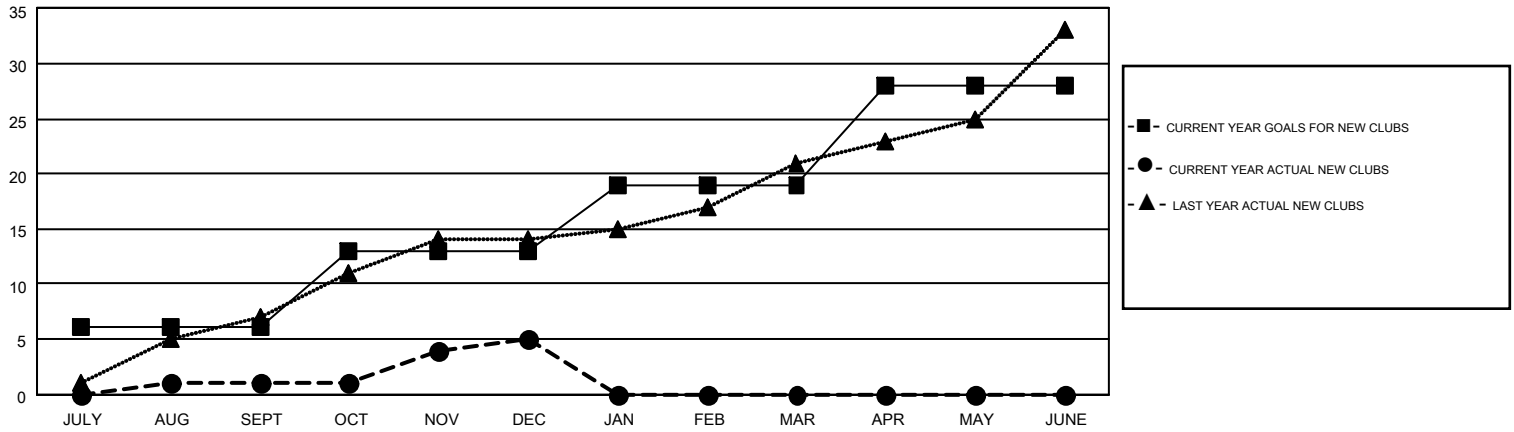
LOCATION: PHILIPPINES

GMT: DATUK NAGARATNAM

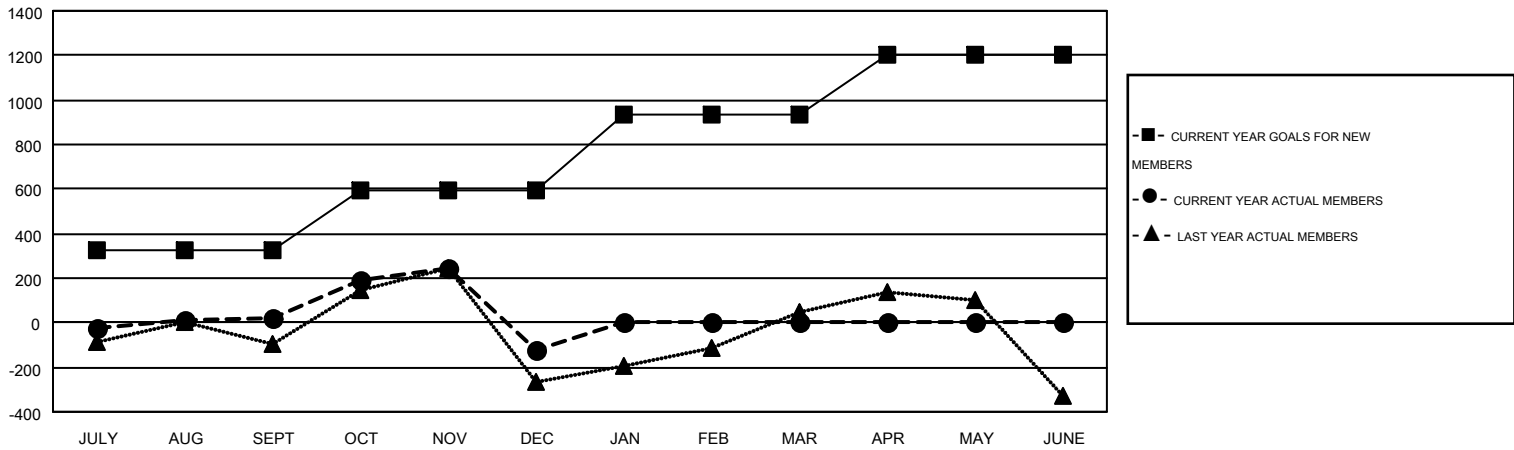
GMT CA 5

| Clubs                 |               |           |               |               | Members               |                 |                               |                 |               |
|-----------------------|---------------|-----------|---------------|---------------|-----------------------|-----------------|-------------------------------|-----------------|---------------|
| RESULTS FOR 2016-2017 |               |           |               |               | RESULTS FOR 2016-2017 |                 |                               |                 |               |
| QUARTER               | NEW CLUB GOAL | NEW CLUBS | DROPPED CLUBS | NET GAIN/LOSS | QUARTER               | NEW MEMBER GOAL | CHARTER AND NEW MEMBERS ADDED | DROPPED MEMBERS | NET GAIN/LOSS |
| JULY/AUG/SEPT         | 6             | 1         | 5             | -4            | JULY/AUG/SEPT         | 322             | 446                           | 423             | 23            |
| OCT/NOV/DEC           | 7             | 4         | 19            | -15           | OCT/NOV/DEC           | 275             | 578                           | 723             | -145          |
| JAN/FEB/MAR           | 6             | 0         | 0             | 0             | JAN/FEB/MAR           | 337             | 0                             | 0               | 0             |
| APR/MAY/JUNE          | 9             | 0         | 0             | 0             | APR/MAY/JUNE          | 269             | 0                             | 0               | 0             |

GOALS AND ACTUAL NEW CLUBS CUMULATIVE



GOALS AND ACTUAL MEMBERS CUMULATIVE



|                        |  |   |                |
|------------------------|--|---|----------------|
| DROPPED CLUBS: 24      | 168 CLUBS OF 353 ADDED 1 OR MORE NEW MEMBERS | <u>GENDER DISTRIBUTION</u>                            |                |
| <u>DROPPED MEMBERS</u> |  | MALE  | 5,464 (52.10%) |
| DECEASED               | 29   | FEMALE  | 5,024 (47.90%) |
| CLUB CANCELLED         | 451  | <a href="#">CLICK HERE FOR HEALTH ASSESSMENT DATA</a> |                |
| OTHER                  | 666  | FAMILY UNIT MEMBERS                                   | 3,661          |
| TOTAL                  | 1,146  | HEAD OF HOUSEHOLD                                     | 1,496          |
|                        |  | NON-HEAD OF HOUSEHOLD                                 | 2,165          |